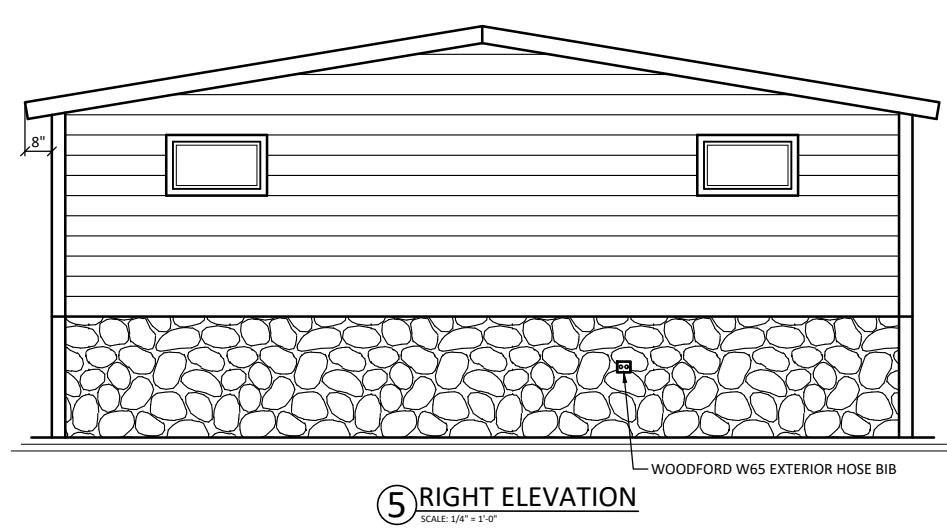
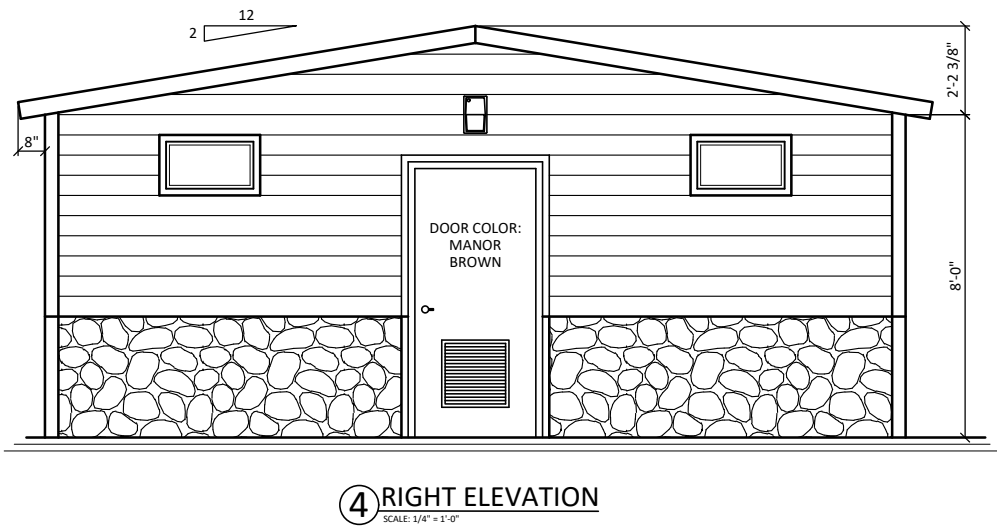
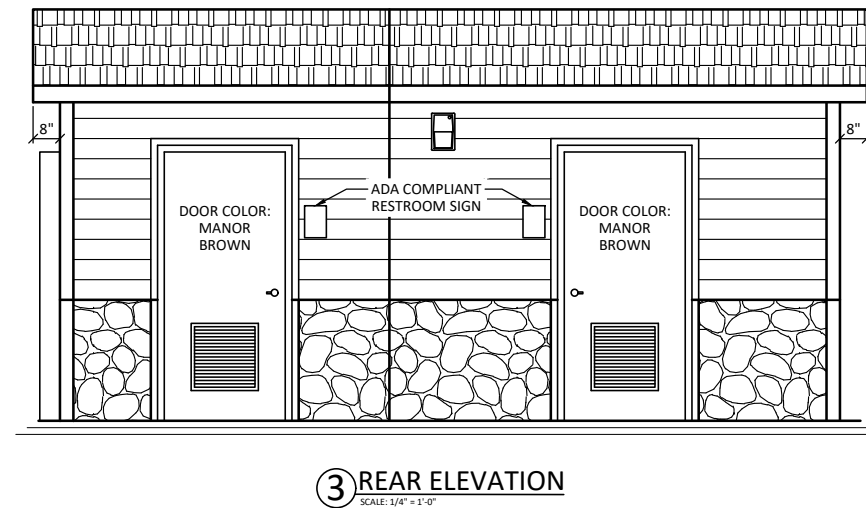
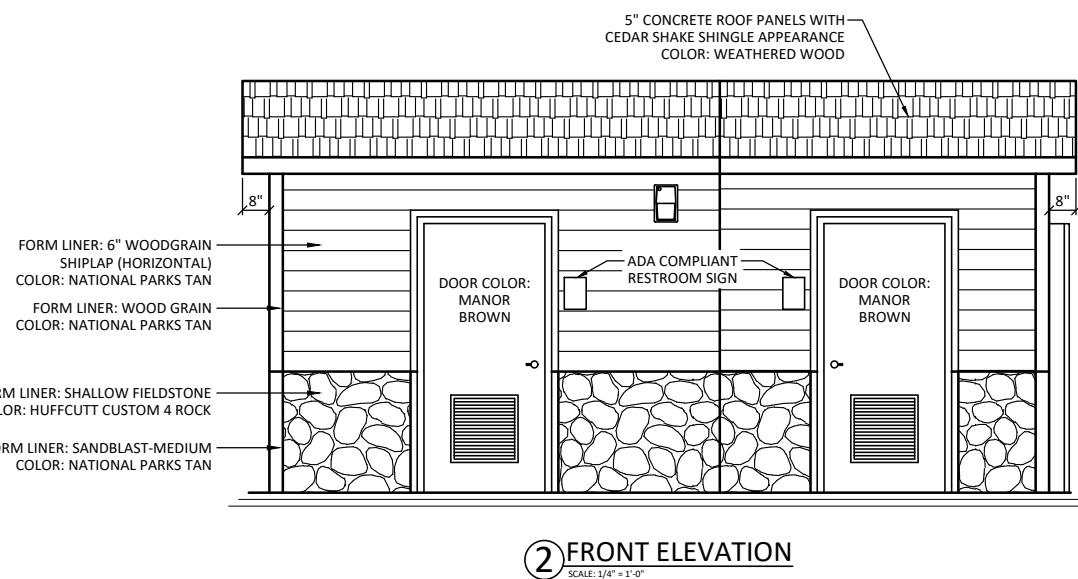
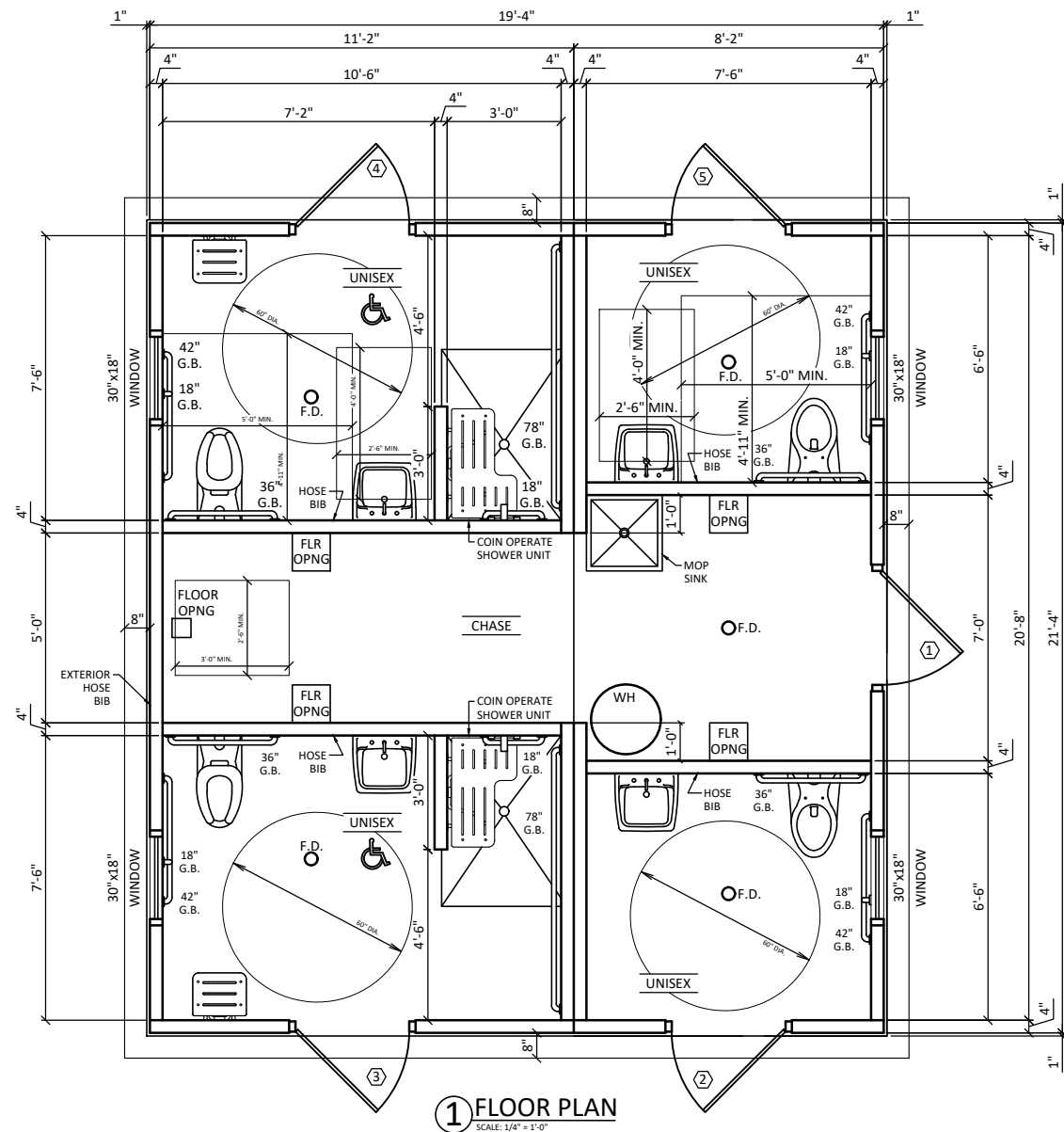


IRON COUNTY-WEBER LAKE

17B-008-19 ASPEN MODULAR FLUSH TOILET BUILDING



SUBMITTAL DRAWINGS	DRAWINGS UPDATED	ENGINEERING DRAWINGS	CHECK SET
			PRODUCTION DRAWINGS

THIS DRAWING SHALL NOT BE COPIED OR SUBMITTED TO OTHERS WITHOUT THE CONSENT OF THIS COMPANY.

4154 123rd STREET
 CHIPPEWA FALLS, WI 54729
 (715) 723-7446 * (800) 924-1516
 FAX (715) 723-7111 * www.huffcutt.com



PROJECT:
 IRON CO.-WEBER LAKE
 17B-008-19

IRON COUNTY-WEBER LAKE

17B-008-19 ASPEN MODULAR FLUSH TOILET BUILDING



SUBMITTAL DRAWINGS
DRAWINGS UPDATED
ENGINEERING DRAWINGS
CHECK SET
PRODUCTION DRAWINGS

THIS DRAWING SHALL NOT BE COPIED OR SUBMITTED TO OTHERS WITHOUT THE CONSENT OF THIS COMPANY.

4154 123rd STREET
CHIPPEWA FALLS, WI 54729
(715) 723-7446 * (800) 924-1516
FAX (715) 723-7111 * www.huffcutt.com



PROJECT:
IRON CO.-WEBER LAKE
17B-008-19

